



# Strawberry River Agricultural Watershed Project

North Big Creek  
319(h) Project  
05-800

Frankie Dickerson  
Project Manager

# North Big Creek 319(h) Project

---

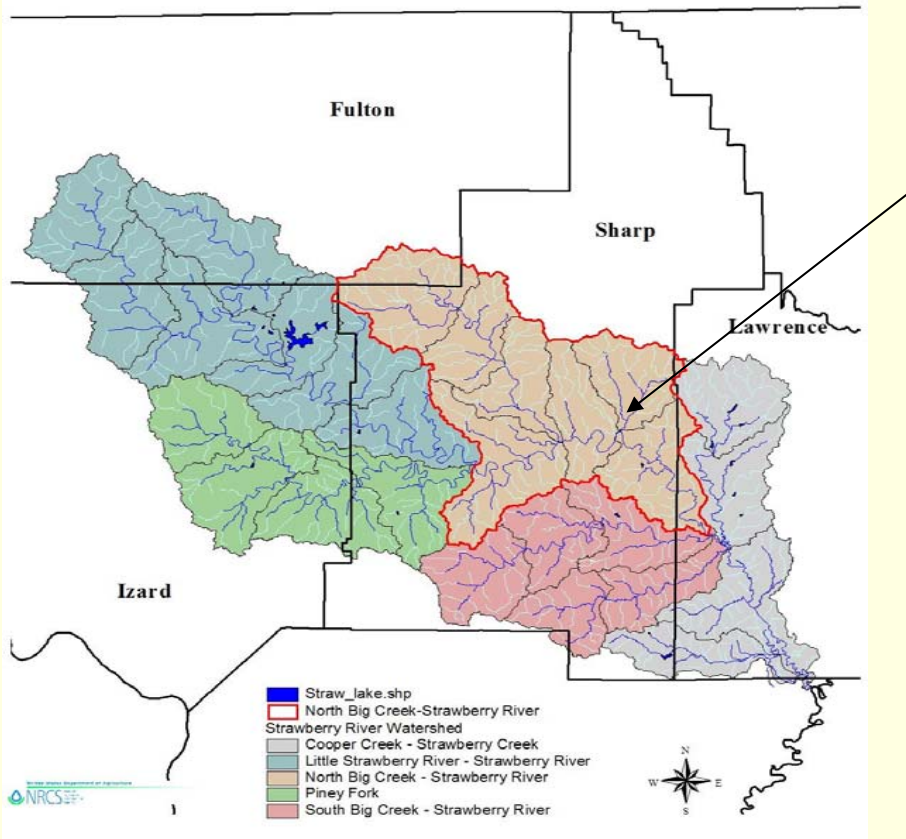
## Three Phase Project:

- 3501 (Upper Strawberry River) 2001-2003
- 3502 (Piney Fork) 2001-2004
- **3503 (North Big Creek) 2005-2008**



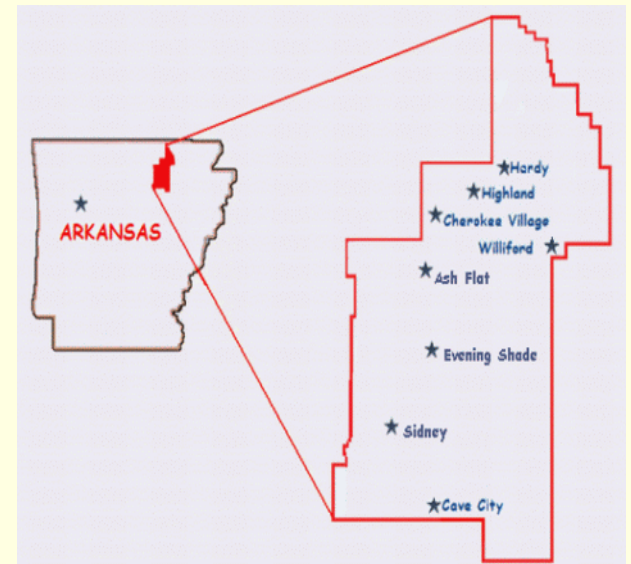
# North Big Creek 319(h) Project

## Strawberry River Agricultural Watershed Project Reach III - North Big Creek



## North Big Creek Watershed

115,008 acres



# North Big Creek 319(h) Project

---

**Project Management:**

**Sharp County Conservation District**

**Project Costs: Total (\$427,978)**

Federal (\$245,129) State/Local (\$182,849)

**\$135,000 Federal dollars was available to  
landowners at 40% cost share**

# North Big Creek 319(h) Project

---

## **Goal:**

Improve land in the watershed.

## **Objective:**

Write 162 conservation plans on 21,060 acres

# North Big Creek 319(h) Project

---

## **Project Tasks:**

- 1) Utilize Conservation District Boards
- 2) Provide Technical Assistance
- 3) Install practices
- 4) Technology Transfer
- 5) Reporting

# Task 1.

---

## **Steering committee responsibilities:**

- **Set priorities for Cost-Share practices.**
- **Review and approve plans and contracts.**
- **Review project progress.**

# Task 2

---

## **Technical Assistance:**

### **Priorities for Conservation Planning are as follows:**

- All farms within a designated Wellhead Protection Area.
- All farms along a blue line stream on Topo Map.
- All farms that lie within one-fourth mile of a blue line stream.
- Priorities were given to the tract of land signed up before other applications when all of above requirements were met.



# Task 2 con't.

---

## **The Grassland Specialist:**

1. Makes farm visit and inventories land.
2. Recommends necessary practices to solve and sediment problems and guide the landowner in choosing the best practices to suit the landowner's conservation needs.
3. Prepares and delivers the conservation plan.
4. Makes at least two follow-up visits on the implementation of the practices.

# Task 3

---

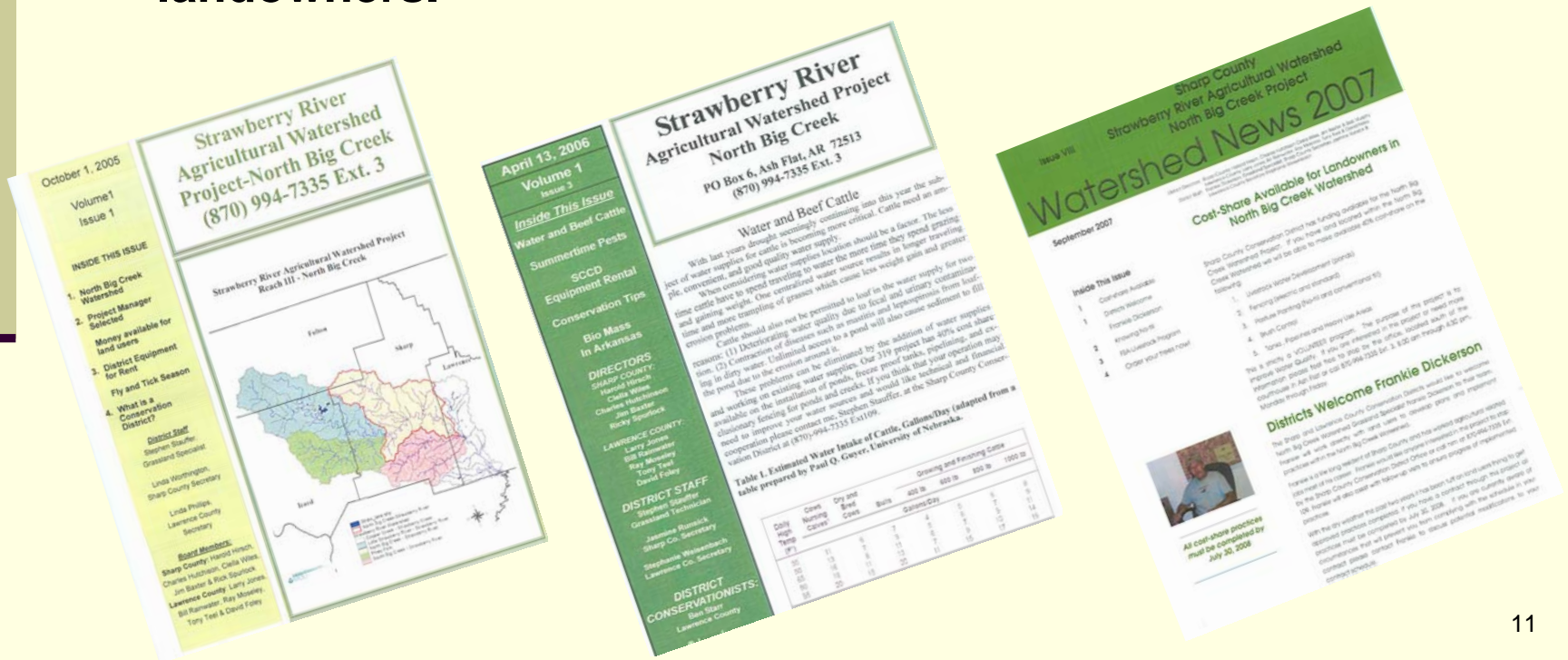
## **Cost-Share 40%: Based on 2005 EQIP Cost list**

- Pasture establishment
- Cross fencing
- Ponds
- Freeze proof tanks
- Heavy use areas around ponds
- Pipelines for freeze proof tanks
- Brush management

# Task 4

## Technology Transfer:

Provided throughout the North Big Creek Watershed area in the form of a quarterly project newsletter to 350 landowners.



# Task 5

---

## Reporting:

1. Quarterly Reports - 11 complete (1 due Oct 10)
2. Annual Reports - 2 complete (1 due Oct 10)
3. Final Report-Due-- Oct 10, 2008

# North Big Creek 319(h) Project

---

## **Measures of Success and Performance:**

**As a result of this project:**

- 162 pasture & woodland plans on at least 21,016 acres.
- BMP's implemented so that erosion is reduced on pastures.



# North Big Creek 319(h) Project

---

## **Accomplishments to date:**

- Hired Grassland specialist
- Held one steering committee meeting.
- Completed 12 newsletters.
- 17,823 acres planned for a total of 137 plans. (as of 9-1-08)
- 181 return visits to farms (as of 6-30-08)

# Best Management Practices: Pasture Establishment

---

**Completed: 285.9 ac.**



# Best Management Practices:

## Cross Fencing

**Completed: 44,592 ft.**





# Best Management Practices: Brush Management

---

**Completed: 2677.2 ac.**



# Best Management Practices:

## Pond/Tank/Fence/HUA

---

**Completed: 3 Pond, 9 Tank, 10 HUA, 2180' Pipe**





# North Big Creek 319(h) Project

---

## Downfalls:

### Cost-Share 40%: Based on 2005 EQIP Cost list

- Pasture establishment--\$178-\$250 ac. **Up \$50+ ac.**
- Cross fencing \$1.10 foot **Up \$1.00 ft.**
- Ponds--\$2000-2500 ea. **Up \$500 ea.**
- Freeze proof tanks--\$450 **Up \$250 ac.**
- Heavy use areas around ponds--\$200 **UP \$100 ea.**
- Pipelines for freeze proof tanks--\$2.00 **Up \$.50 ea.**
- Brush management--\$47ac. **Up \$43+ ac.**

# North Big Creek 319(h) Project

---

## **Incentives to implement a conservation plan are:**

- Cost effective (if do work themselves)
- Farmers received 40% cost-share
- Equipment rental from district
- Soil Saved

# North Big Creek 319(h) Project

---



**-Questions-**