

Strawberry River Watershed Monitoring 16-700

Jennifer L. Bouldin, PhD
Ecotoxicology Research Facility
Arkansas State University



Land use

- 56.5% forested
- 35.2% grassland
- 1.8% cropland

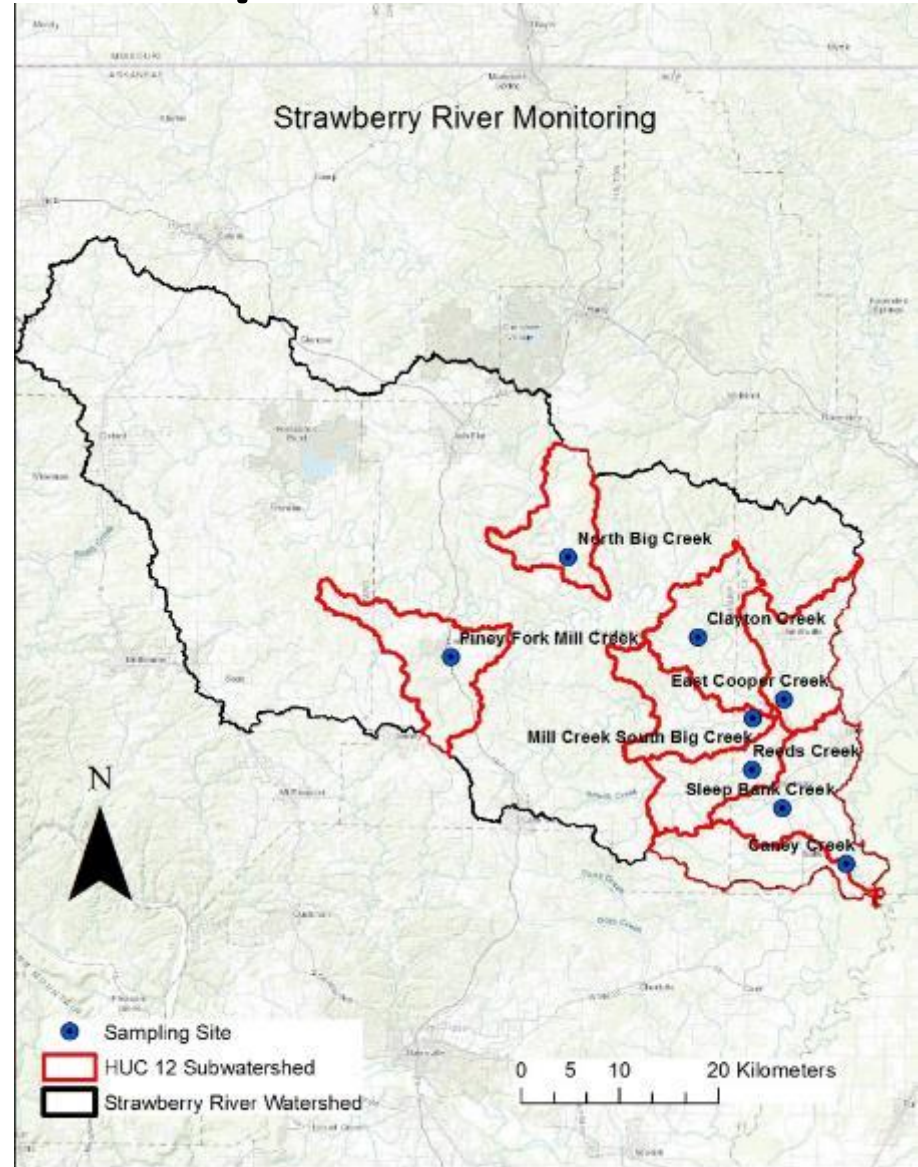
- Determine source of sediment loading by sampling tributaries



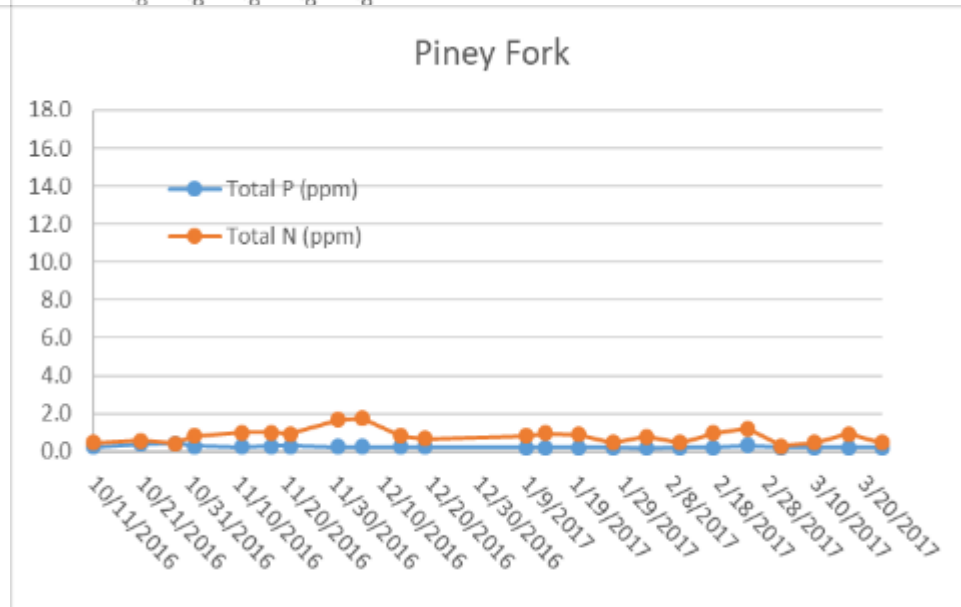
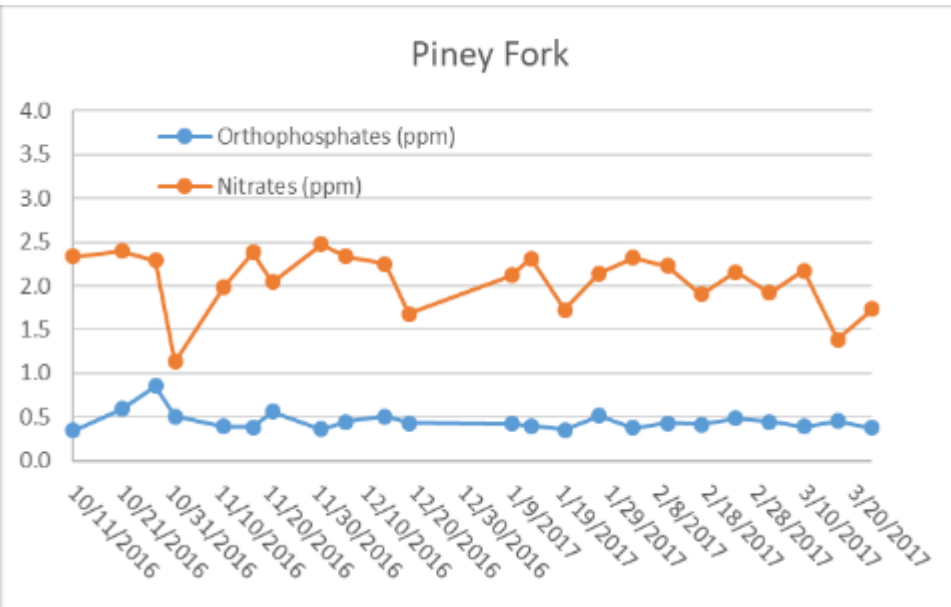
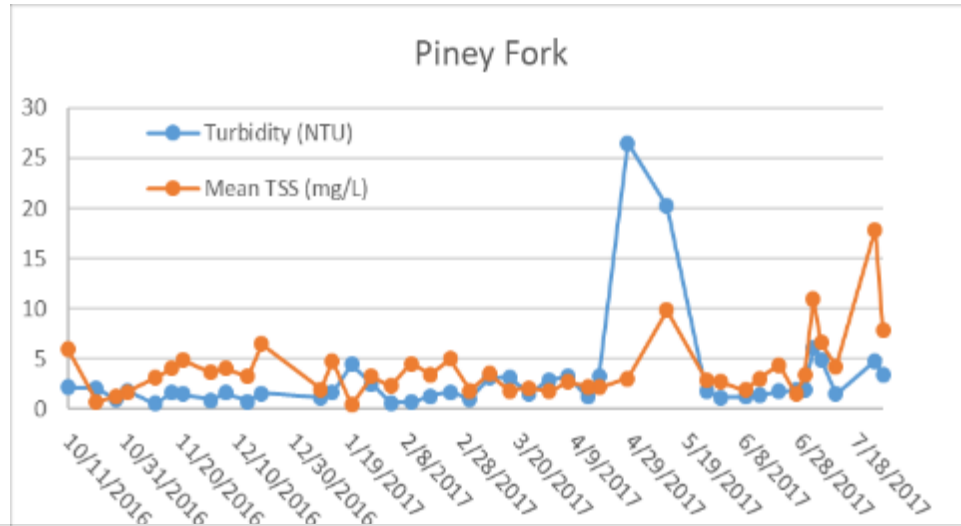
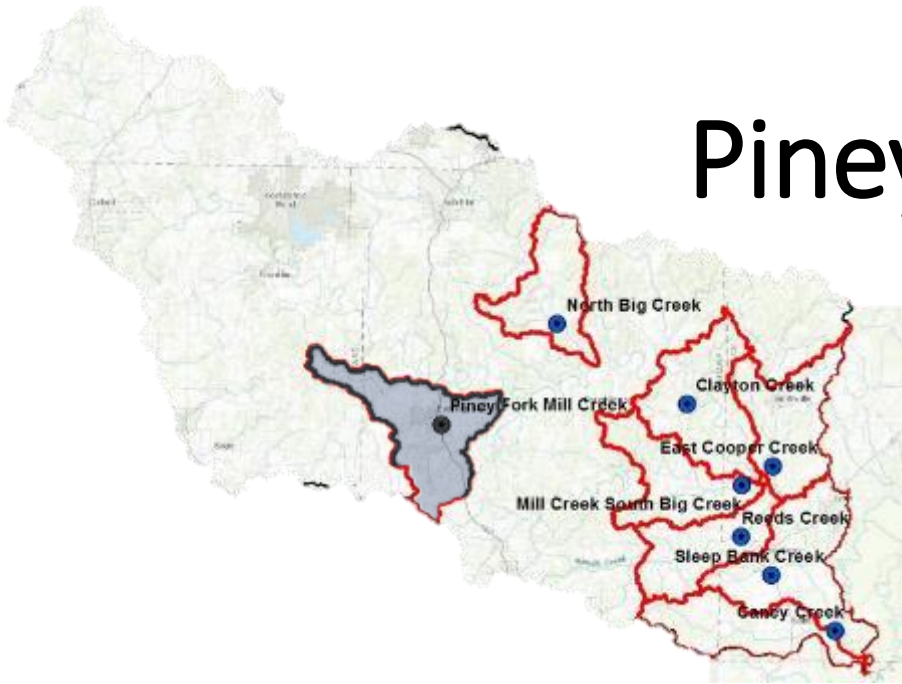
Tributaries sampled

Main tributaries in middle and lower section of watershed

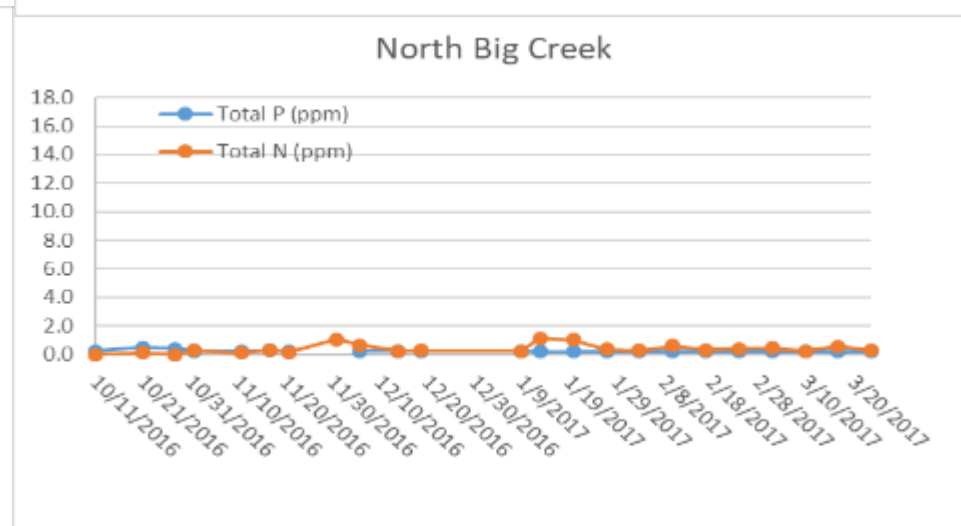
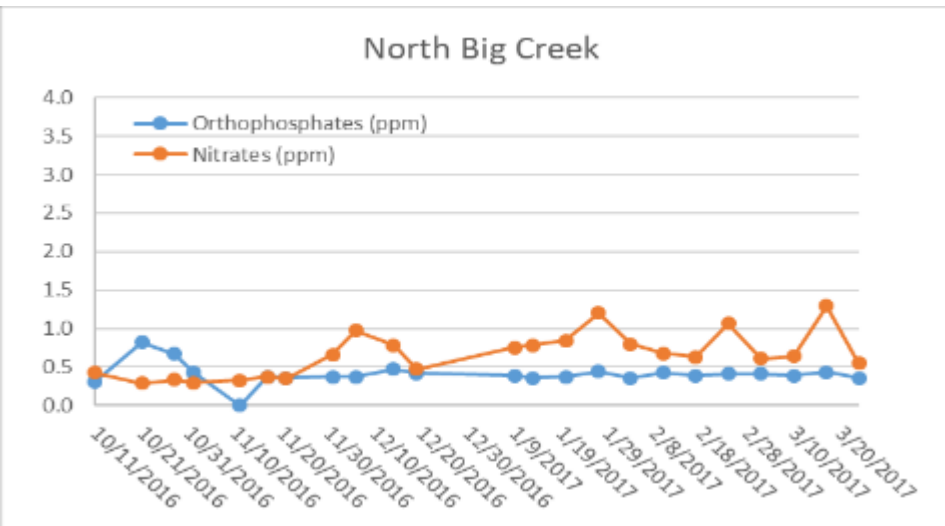
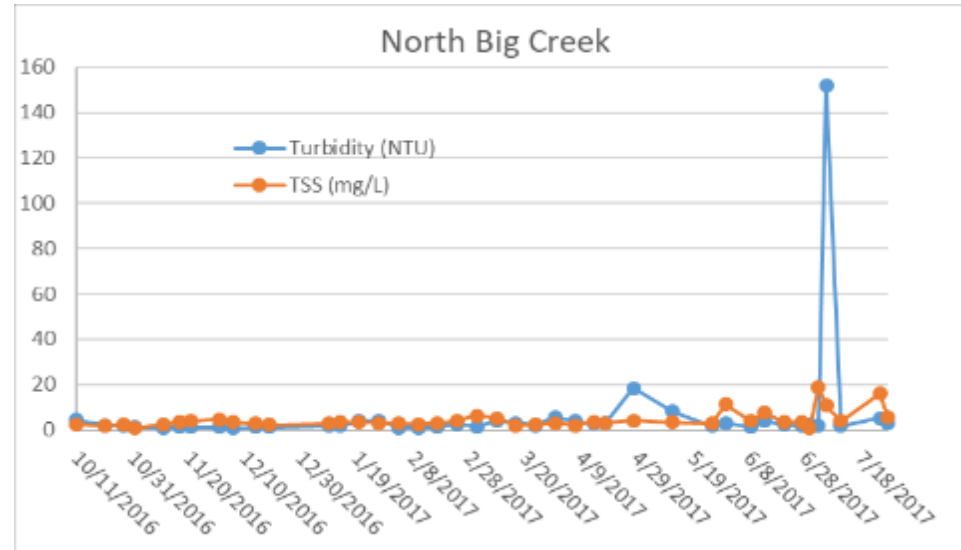
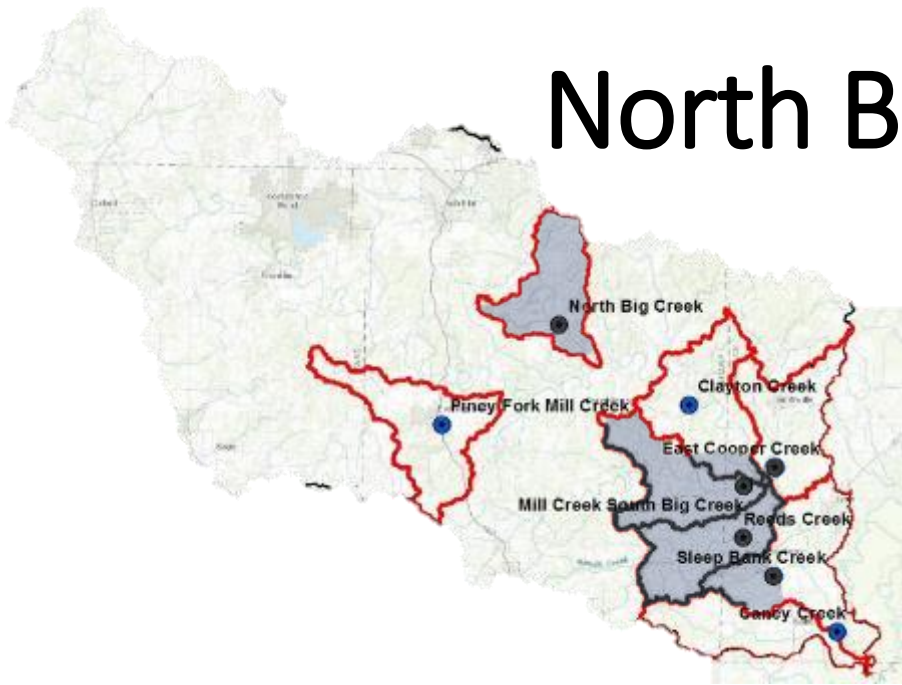
- Weekly sampling



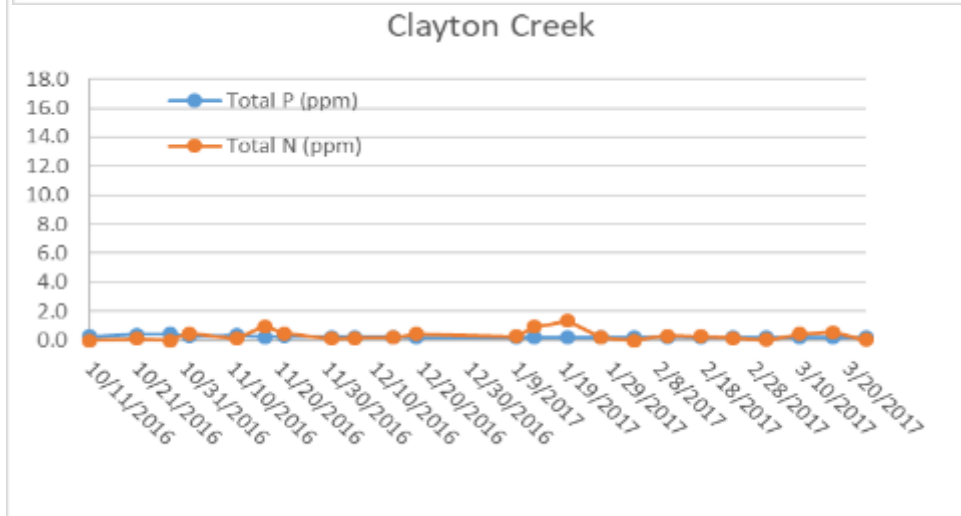
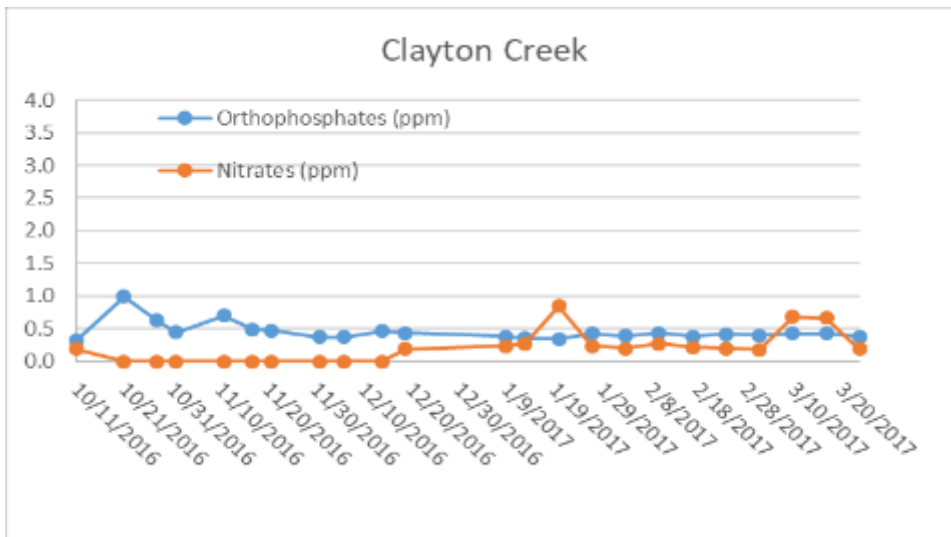
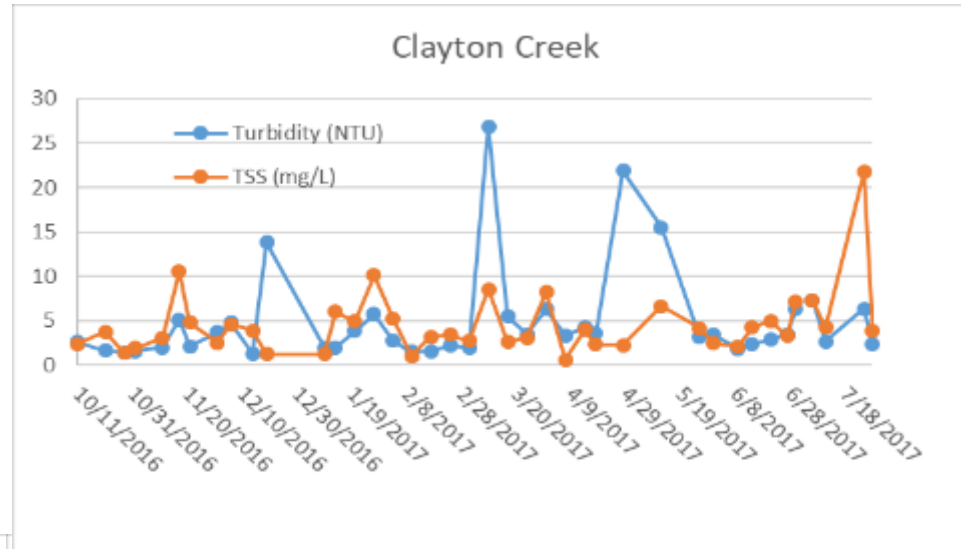
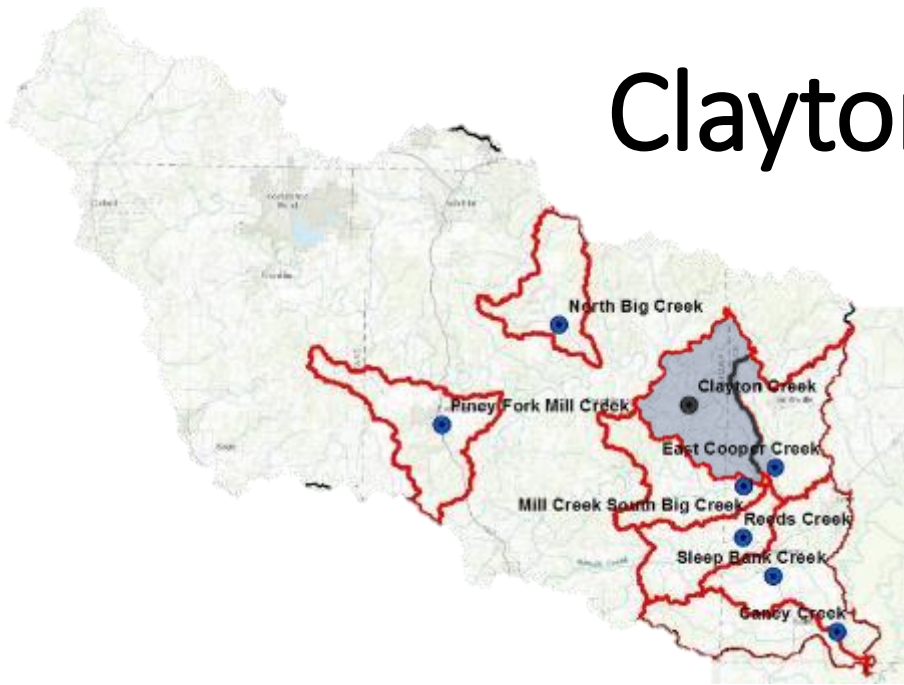
Piney Fork



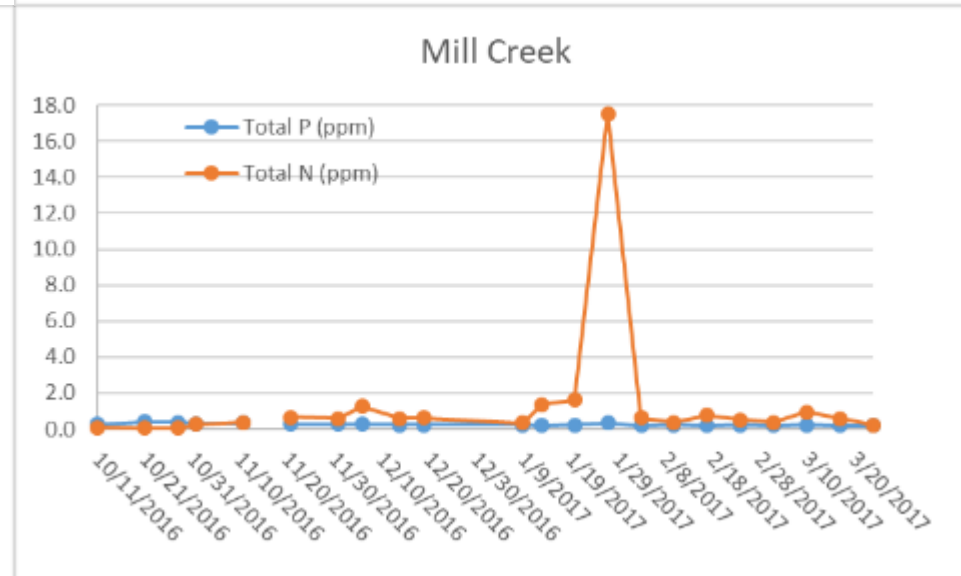
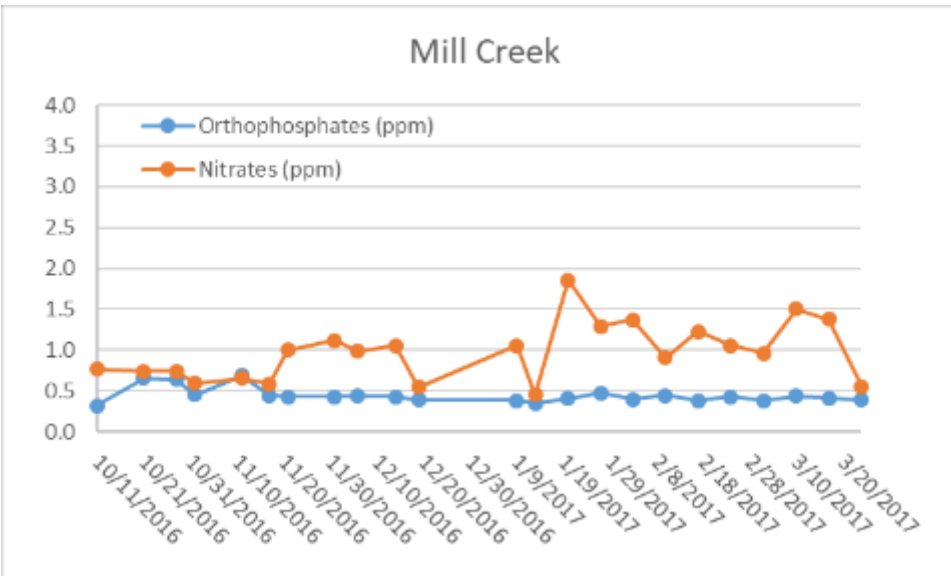
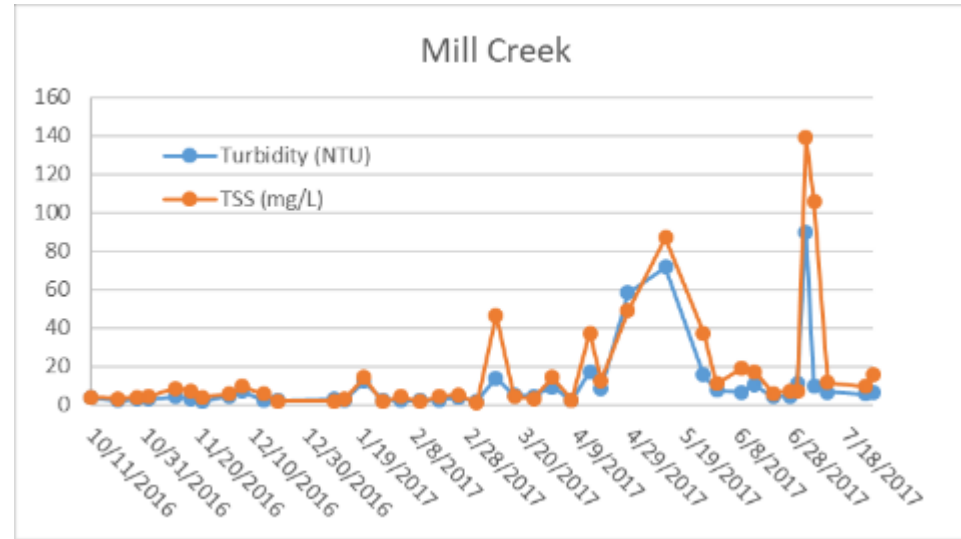
North Big Creek



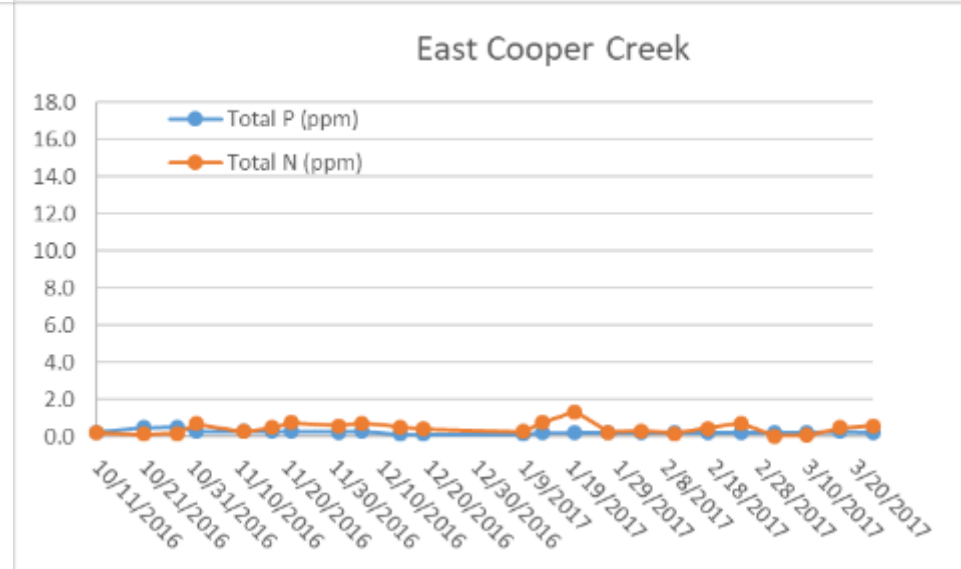
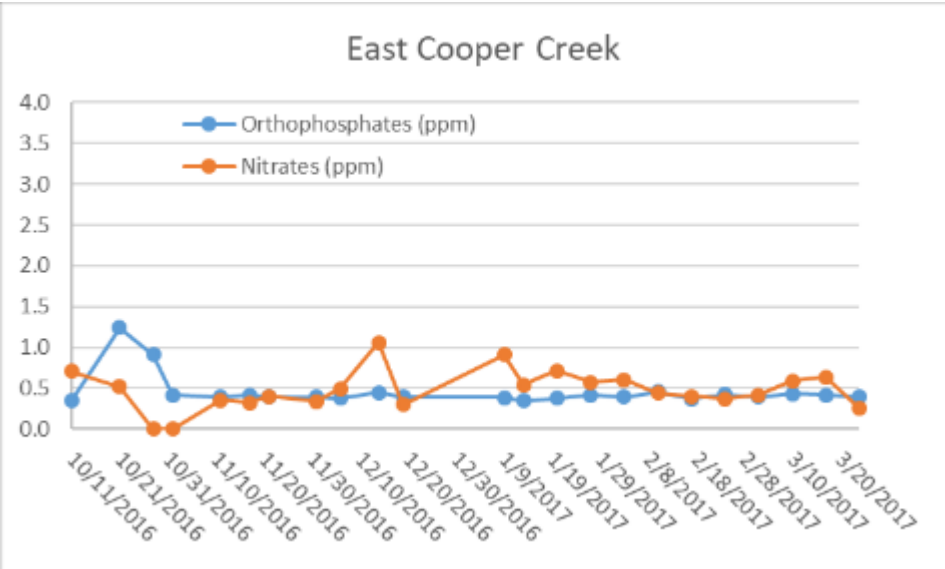
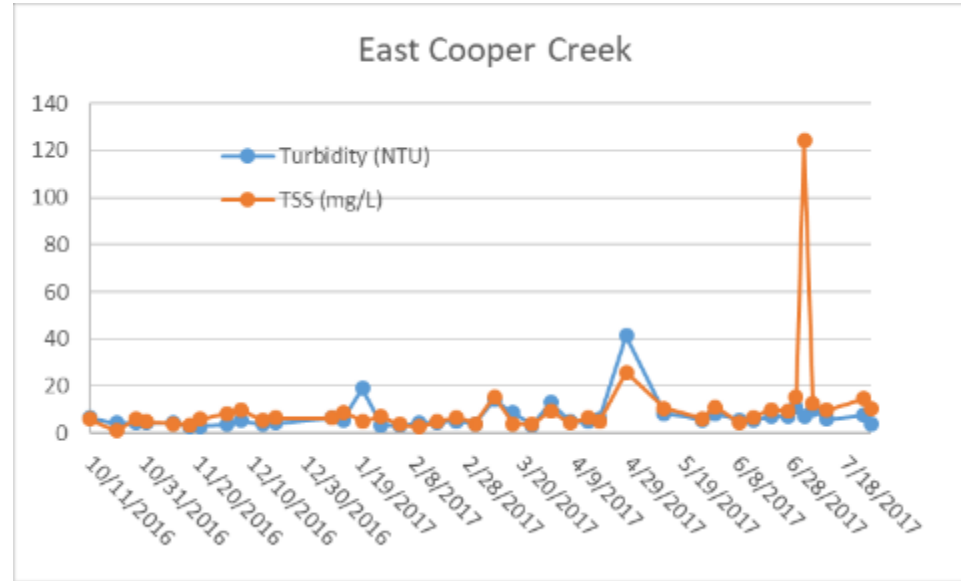
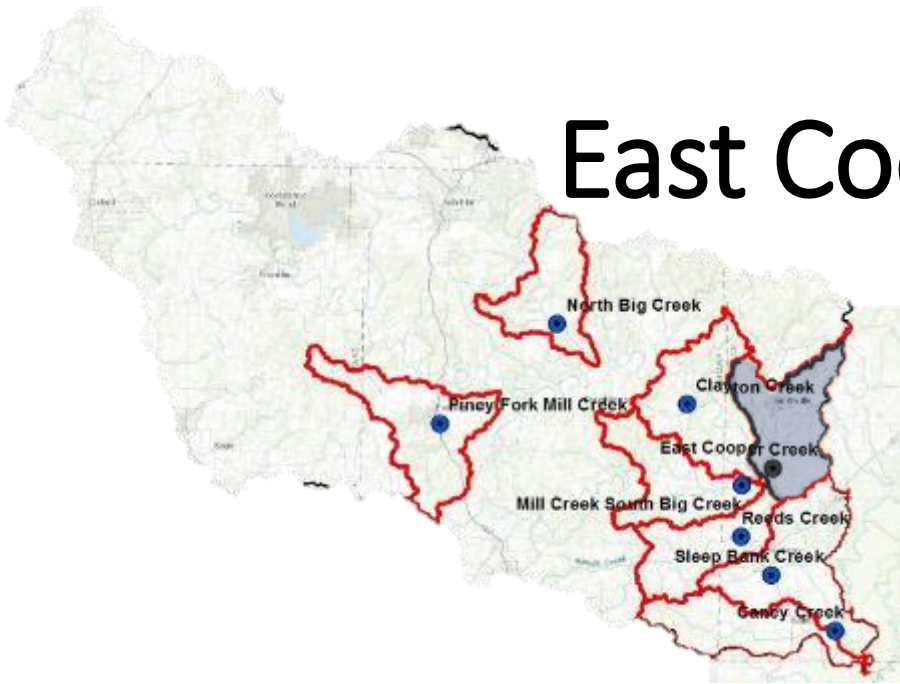
Clayton Creek



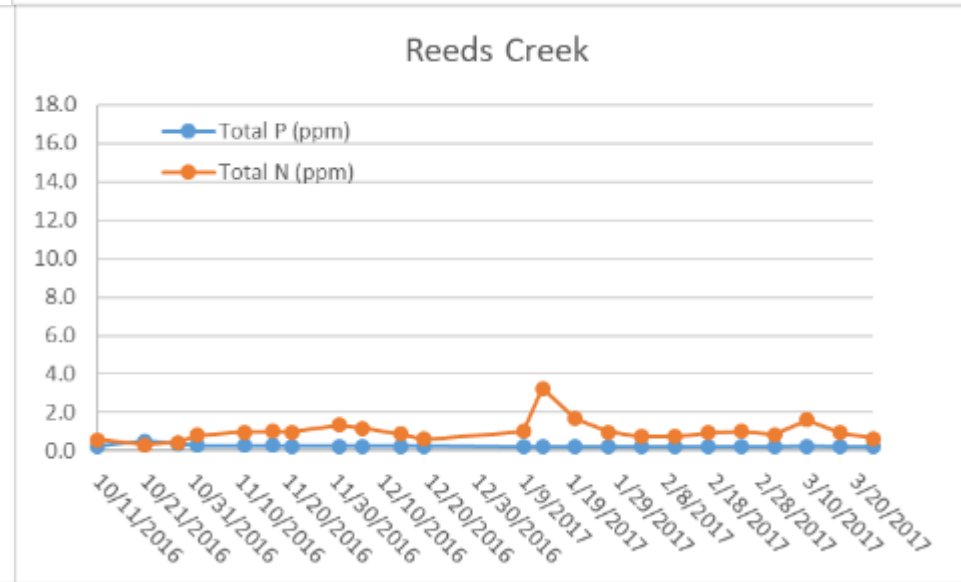
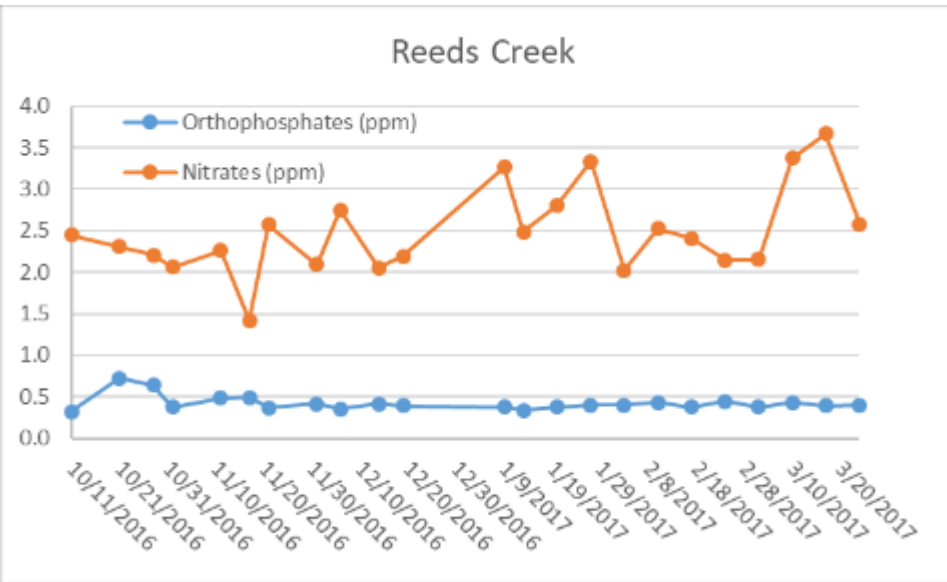
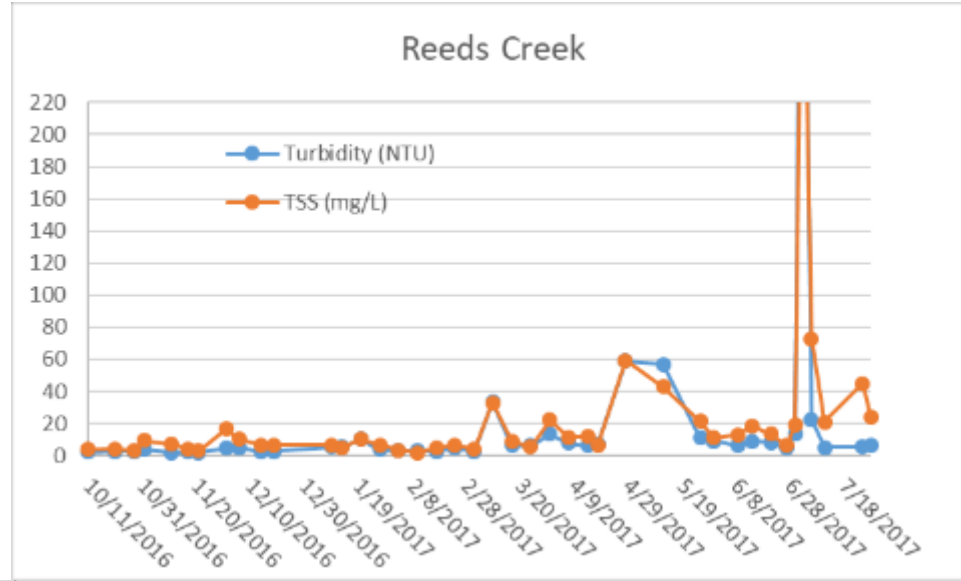
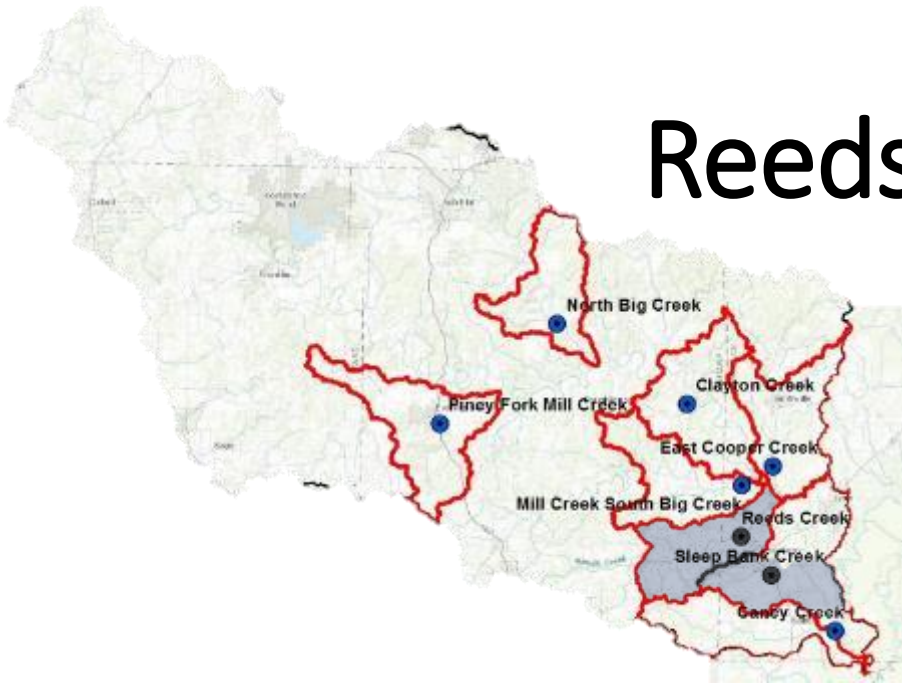
Mill Creek



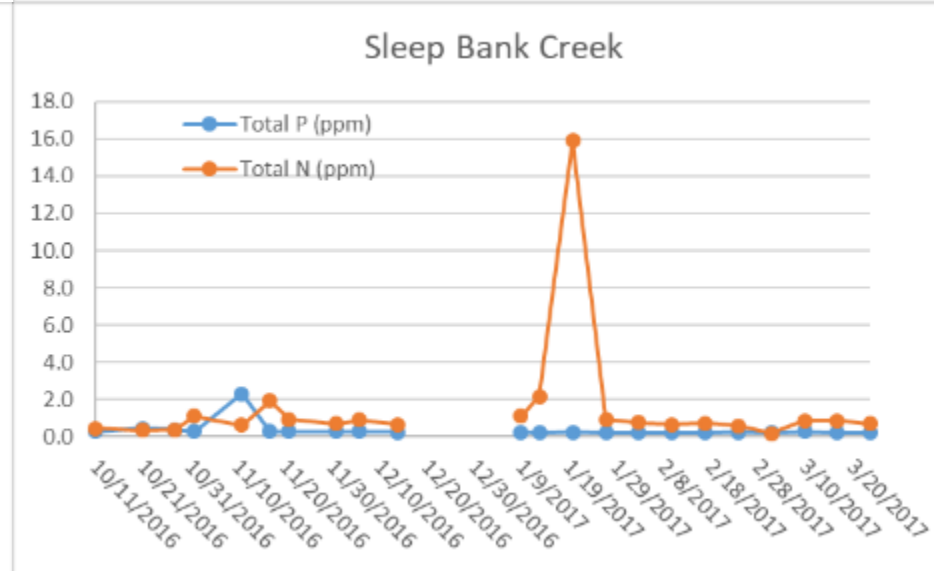
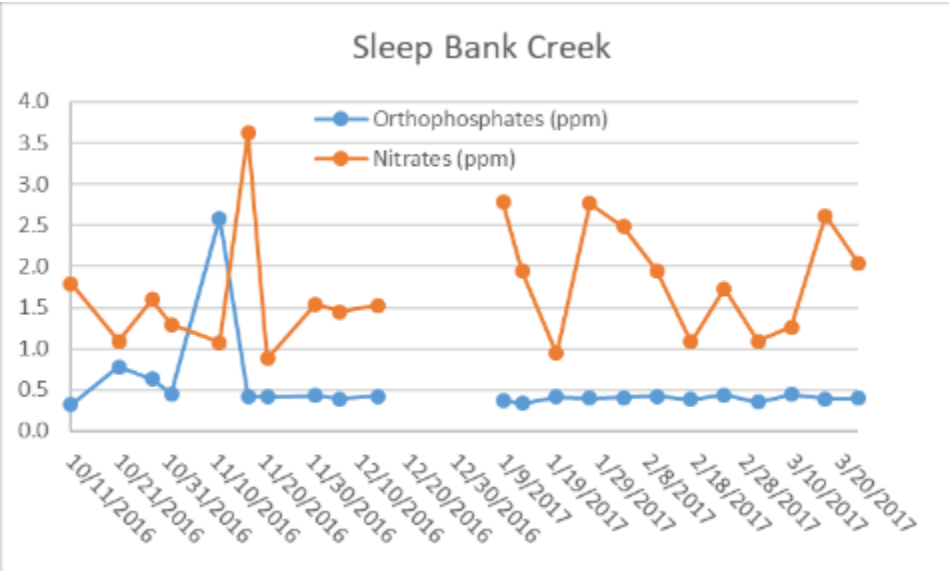
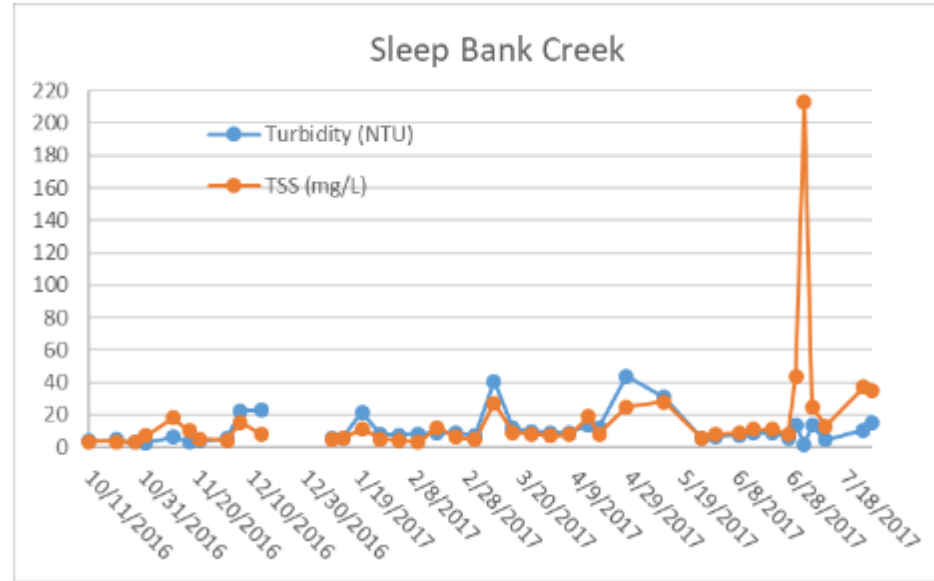
East Cooper Creek



Reeds Creek



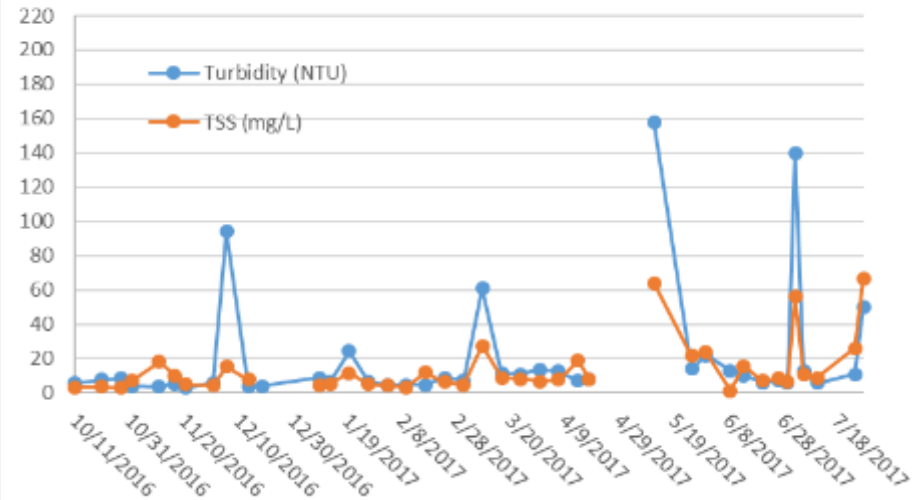
Sleep Bank Creek



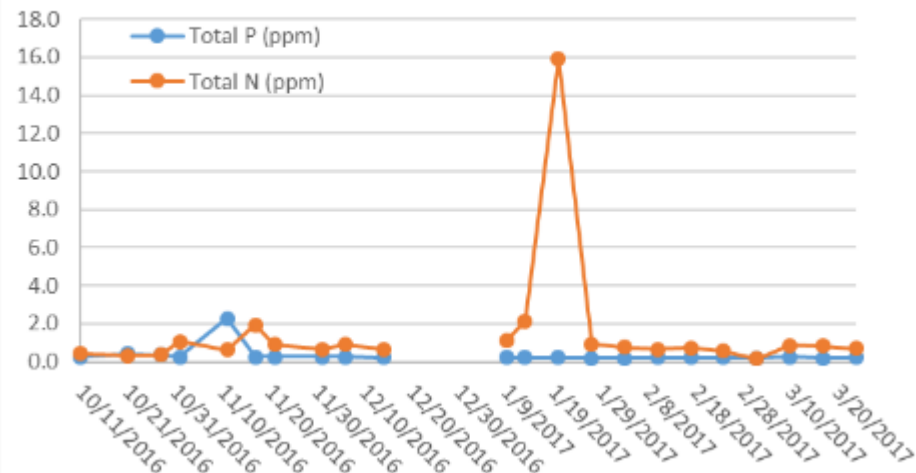
Caney Creek



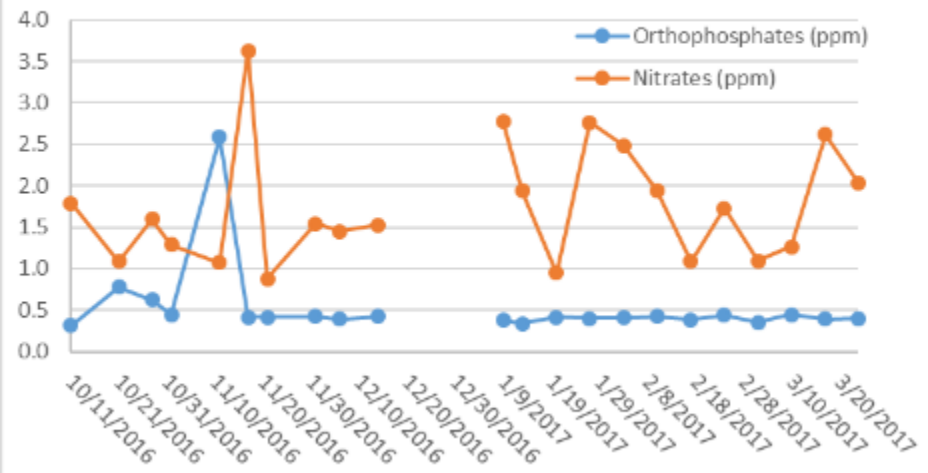
Caney Creek



Caney Creek



Caney Creek



Questions?

