

Water Quality Demonstration & Educational Program for Main Street Little Rock

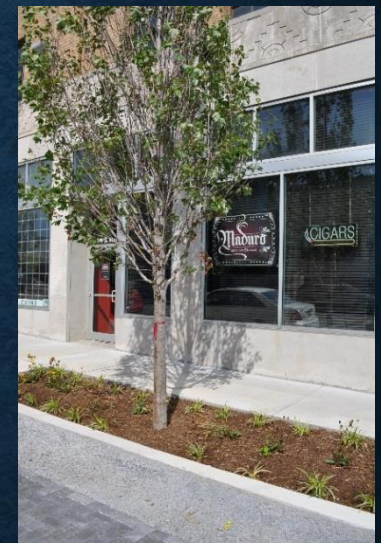
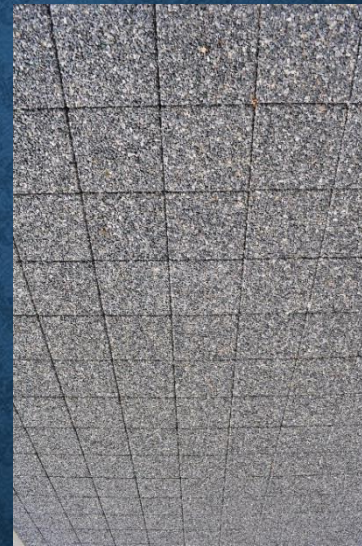


**NONPOINT SOURCE
MANAGEMENT
(319) PROGRAM**

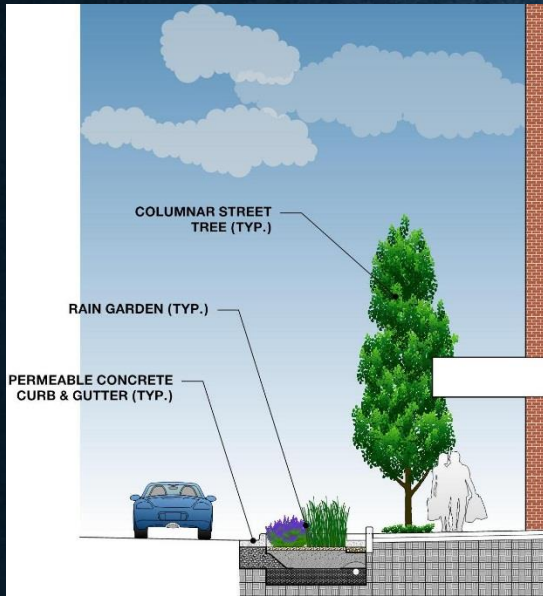
**TOTAL PROJECT COST
\$1,578,959
FEDERAL \$900,000
CITY OF LITTLE ROCK
\$678,959 +
(CASH & INKIND)**

DEMONSTRATE BENEFITS OF

- Low Impact Development
- Porous Pavers
- Tree Wells
- Rain Gardens
- Water Filtration



Rain Gardens, Permeable Concrete and Columnar Trees

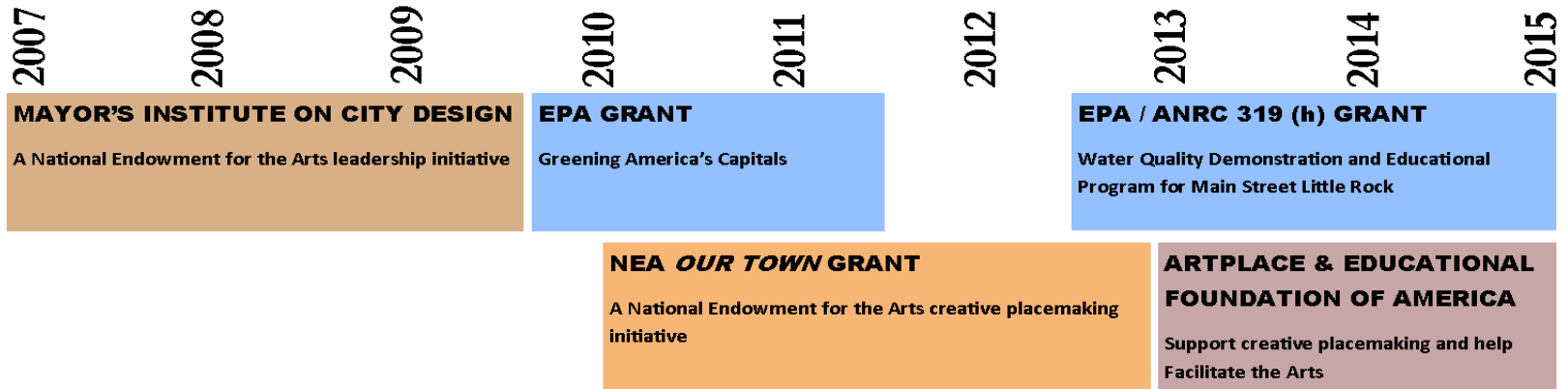


Permeable Pavers and Vegetative Filter to Rain Garden



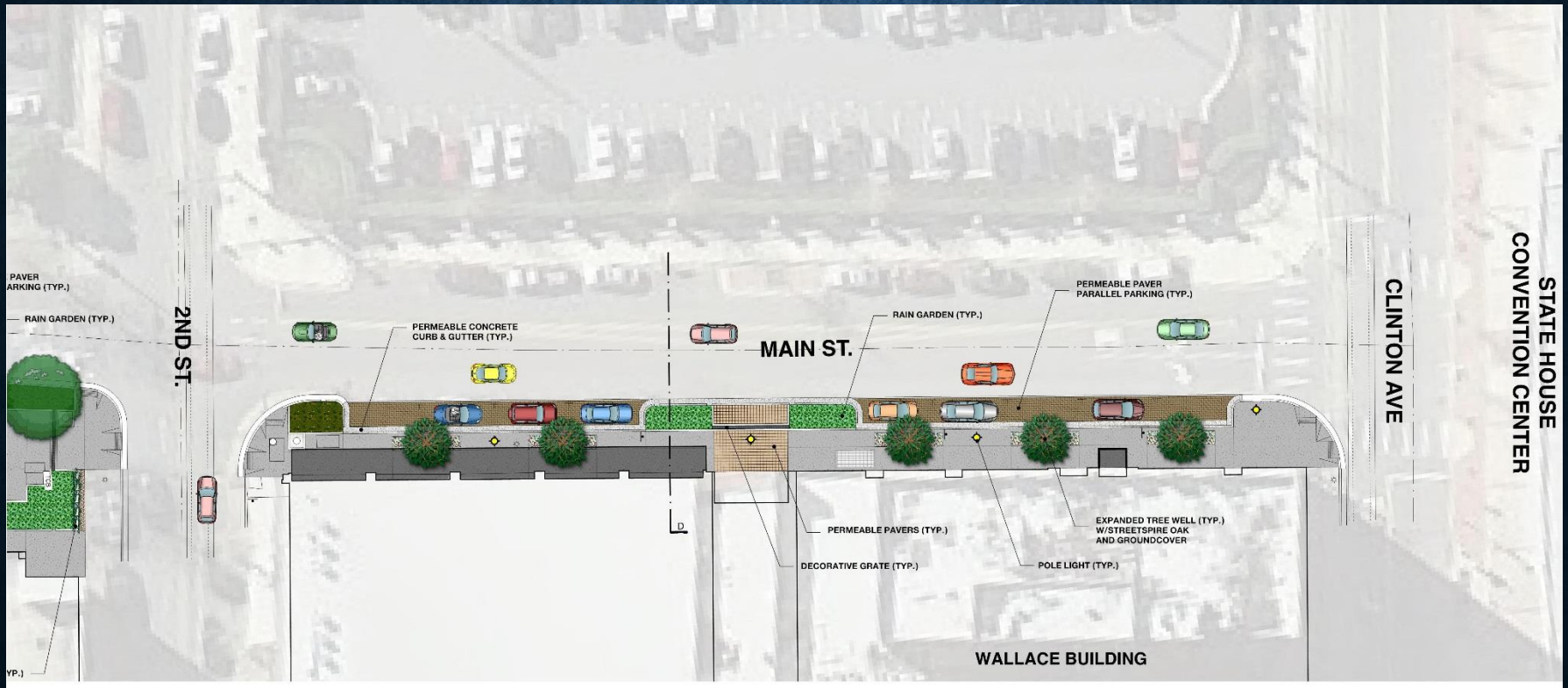
CREATIVE CORRIDOR INITIATIVES

Stakeholder Participation



Reed Realty Advisors Arkansas Building Authority
 Wig Shop Doyle Rogers Construction Consortium of Visual Artists Stephens Inc.
 Arkansas Symphony Orchestra Donaghey Building
 Moses Tucker Real Estate RAO City of Little Rock WD & D Architects
 LR Convention & Visitors Bureau Metroplan Downtown Partnership
 Ballet Arkansas Centre for the DansArts KATV Arkansas Arts Center Crafton Tull
 Township Builders eStem Charter Schools East Harding Construction Orbea
Arkansas Repertory Theatre Arkansas Teacher Retirement System Bruno's
 Doug Meyer Bennett's Military Surplus CJRW Cranford Co.
 Arkansas Historic Preservation Program Maduro Cigar Bar & Lounge
 Level Mann on Main Samantha's Tap Room Matt McLeod Fine Art

100 BLOCK MAIN









200 BLOCK MAIN

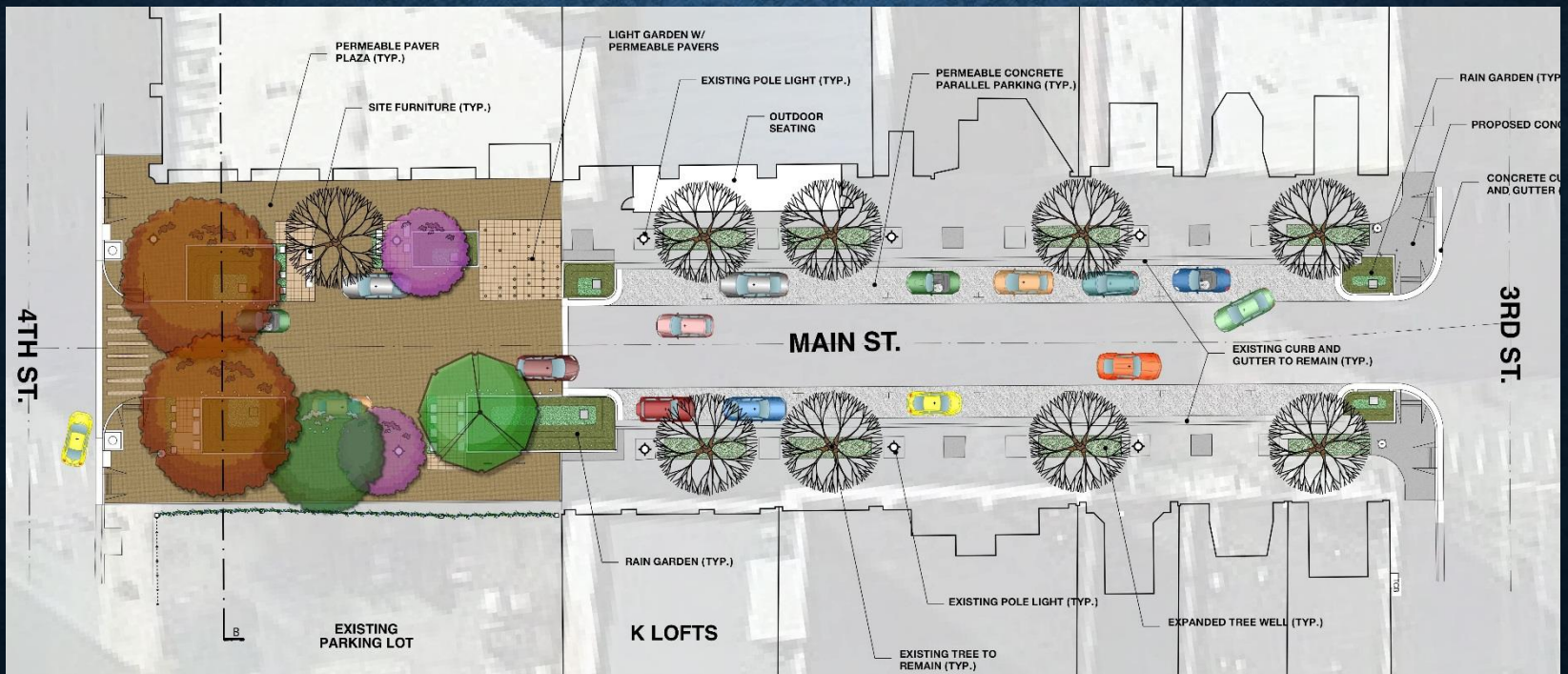


Rain Garden, Permeable Paver Plaza & Drive Lanes



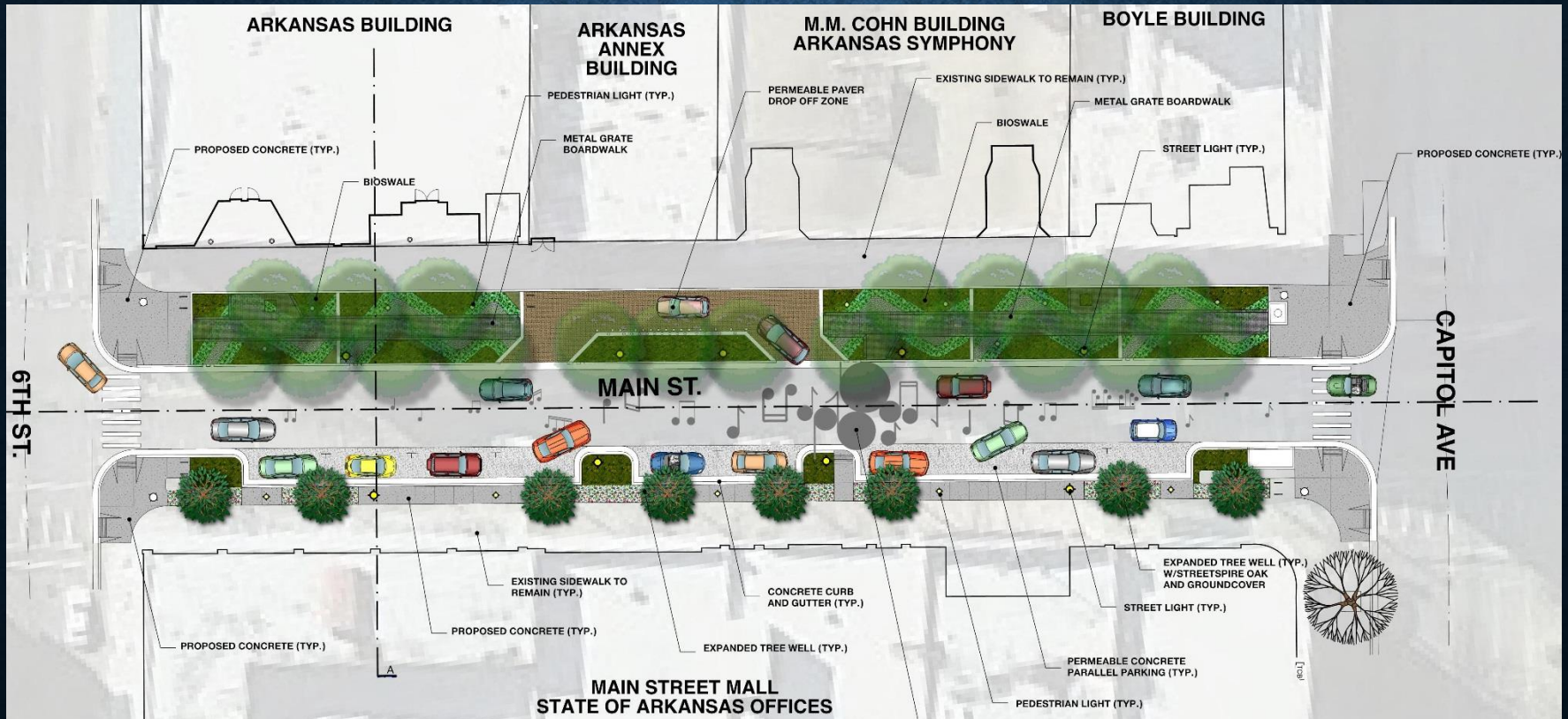
Bioswale, Metal Grate Boardwalk & Permeable Concrete Parking

300 BLOCK MAIN





500 BLOCK MAIN





EDUCATE

- Public Meetings
- Signage
- Cable TV Updates
- YouTube Educational Video
- Educational Presentations



EDUCATE AND INVOLVE THE COMMUNITY



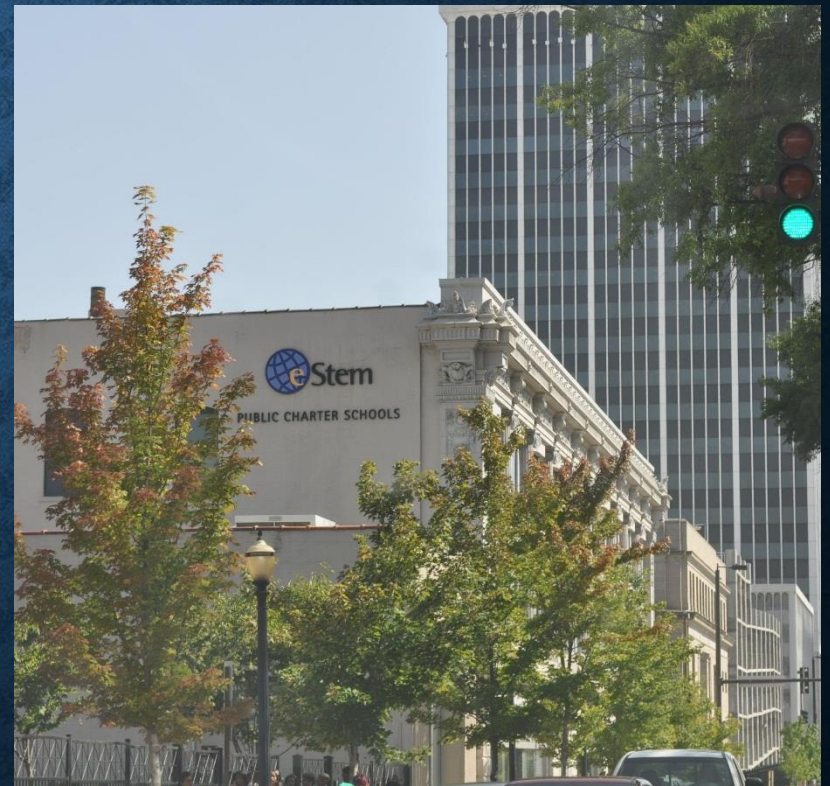
Educational Video – City of Little Rock YouTube:

<http://www.littlerock.org/vp/4489.aspx?url=/lid/>

Partner

eStem Public Charter School

- Committee of Teachers
- Start with 7th Grade across-the-curriculum
- AP Environmental Science Advanced Work



CHALLENGES

- Storm water
- Beautification vs. Water Quality
- Budget Constraints
- Basements Under Street
- “Challenged” Plants
- Tree Removal/Replacements
- Maintenance Issues



MAIN STREET WELCOMES CREATIVE CLASS

A tipping point for Little Rock
Perhaps downtown Little Rock is finally at a tipping point after a recent afternoon when I park

Downtown: the 'Place' to be

Placemaking, as defined by the Project for Public Spaces, is the process of making public places more collectively and intentionally shaped. Placemaking is on the planet.

Arkansas Symphony Orchestra to Move Offices to Main Street

by **Kate Knable**
Posted 1/28/2013 11:47 am
Updated 1 year ago

The Arkansas Symphony Orchestra has executed a plan to move its practice space and offices to Main Street in Little Rock.

million Main Street redevelopment project cated

Lesnick

published today at 8:47 a.m. Updated today at 11:18 a.m.

<http://www.arkansasonline.com/news/2013/jun/02/south-main-aims-cozy-vibe>

South Main aims for cozy vibe

Hands-on investors Davis, Fox gave rebirth its momentum

By **Jessica Seaman**

... said the symphony's board

THAT'S BUSINESS

Main to get another big mixed-use project

Main Street revival

published today at 7:06 a.m.

Coming soon: Low Impact Development



Remediation Funds Provided by



COUNT PULASKI

Pulaski County Brownfields

Where Brown = **GREEN**™

www.pulaskicountybrownfields.com



THANK YOU

City of Little Rock

