

LOWER NORFORK DAM PROJECT

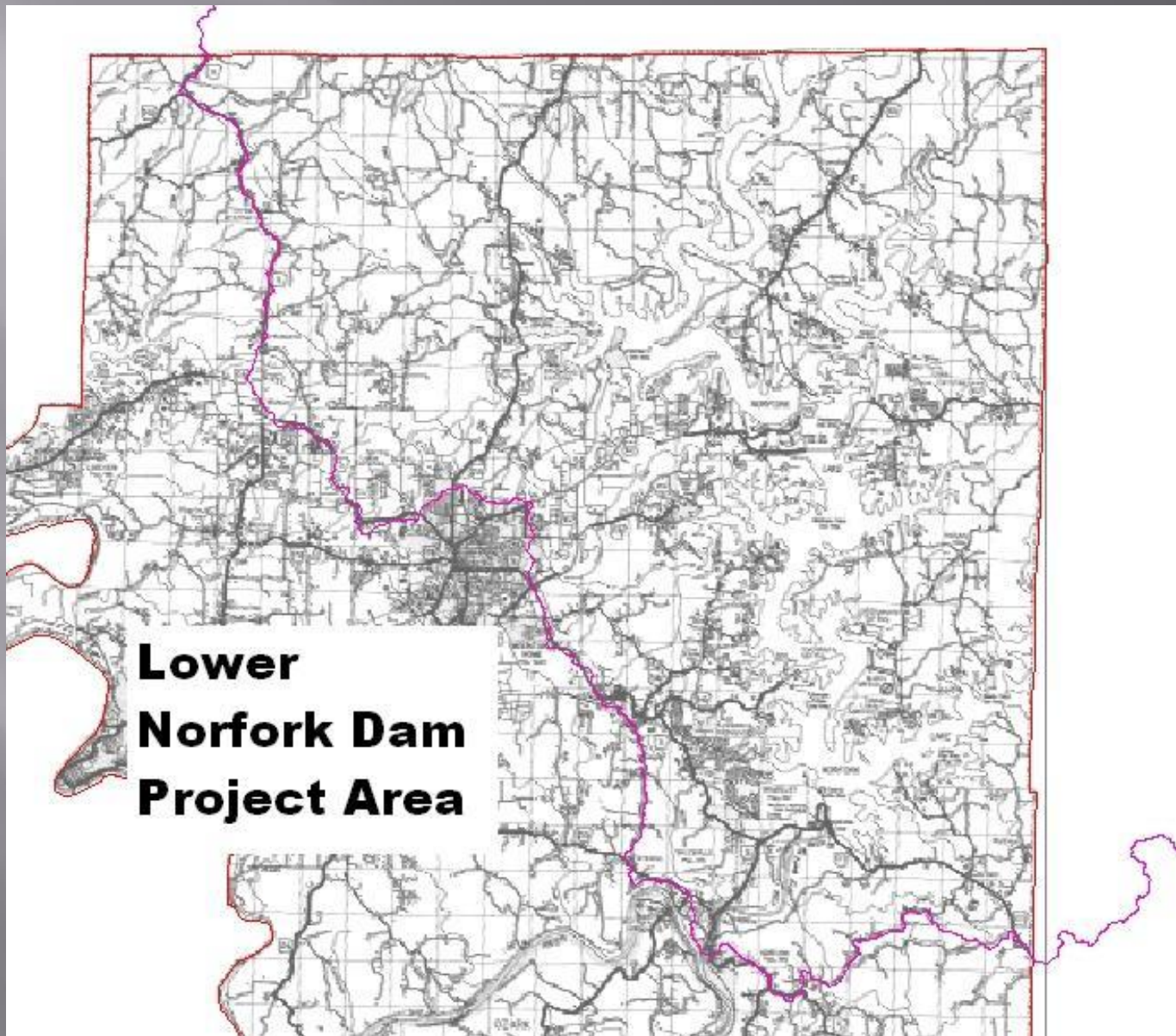
Baxter County Conservation District

Lower Norfork Dam Project

- ▣ Baxter County Conservation District
- ▣ Arkansas Natural Resources Commission
- ▣ EPA Section 319 of Clean Water Act

Those aiding in the project

- ▣ Baxter County Conservation District
- ▣ Arkansas Natural Resources Commission
- ▣ US Environmental Protection Agency
- ▣ Arkansas Association of Conservation
- ▣ Baxter County Cattlemen's Association
- ▣ Baxter County Cooperative Extension Service
- ▣ Baxter County Fair Board
- ▣ Mountain Home FFA



**Lower
Norfolk Dam
Project Area**

Best Management Practices

- ▣ Fencing
- ▣ Pasture Establishment
- ▣ Brush and Weed Management
- ▣ Watering Facilities
- ▣ Heavy Use Areas
- ▣ Stream Development
- ▣ Animal Waste Systems
- ▣ Stream Bank and Shoreline Protection
- ▣ Buffer Areas

Fencing



Pasture Loss Due To Severe Drought



Pasture Establishment



Pasture Establishment



Brush Management



Watering Facilities



Heavy use areas



Project Goals

- ▣ 150 Conservation Plans on 21,750 Acres of Pasture Land.
- ▣ 6.5 Miles of Stream Bank with voluntary livestock exclusion.
- ▣ Establish a GOOD WORKING RELATIONSHIP with landowners

Getting The Word Out

- ▣ Newsletters
- ▣ Radio spots
- ▣ Magazine articles
- ▣ Public meetings
- ▣ Field days
- ▣ Booth at the Baxter County Fair
- ▣ People in the program talking to other people

Results

- ▣ 59 Conservation Plans Written.
- ▣ 93% of Cost Share Funds In The Landowner's Hands.
- ▣ BMP's Implemented on 2,236 Acres.
- ▣ 11,131 Feet of Fencing Installed
- ▣ Utilization of Equipment Made Available by the Lower Norfolk Dam Watershed Project.
- ▣ Improve Attitudes Among Landowners Concerning Water Quality and Government Projects

Lessons Learned

- ▣ Don't let participants get too much going at once.
- ▣ Stay in close contact with the landowner.
- ▣ Be ready to listen!

Water Quality



Questions?

